



# Soft Aspects

RIAs & Beyond



**New light of Rich Internet Applications**

# WebGalileo Faces© Chart Component

## Quick Start

### Table of Contents

1Overview.....	3
2Setup.....	3
3Usage examples.....	4

## 1 Overview

The WebGalileo Faces Chart Component supports 27 types of charts . In addition , the component supports handling of image maps and processing of client-side events using AJAX .

## 2 Setup

To setup the component the following steps should be accomplished :

1. Add wgf-core.jar, wgf-faces.jar and wgf-tags.jar libraries from WebGalileo Faces distribution package to WEB-INF/lib directory of a target web application.
2. Add webgalileo.key and chart-comonent-faces-config.xml from WebGalileo Faces distribution package to WEB-INF directory of a target web application.
3. Setup necessary dataset and place it to managed bean definition of a target web application.
4. Make sure the following setting are present in the web.xml file :

```

.....
<context-param>
  <param-name>javax.faces.CONFIG_FILES</param-name>
  <param-value>
    .....
    /WEB-INF/chart-faces-config.xml,
    .....
  </param-value>
</context-param>
.....
<servlet>
  <servlet-name>DisplayChart</servlet-name>
  <servlet-class>org.jfree.chart.servlet.DisplayChart</servlet-class>
</servlet>
.....
<servlet-mapping>
  <servlet-name>DisplayChart</servlet-name>
  <url-pattern>/chart/*</url-pattern>
</servlet-mapping>

```

### 3 Charts samples

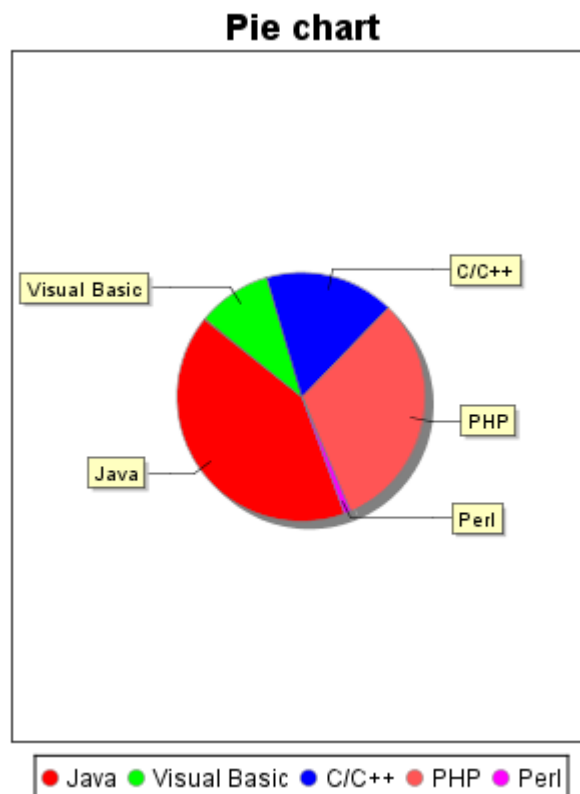
Below are JSF code snippets responsible for corresponding Chart type assembling.

#### 1. Pie chart.

Component's definition:

```
<chart:chart id="chart1"
  datasource="#{chartBean.pieChartSource}"
  type="PIE"
  alt="Sampe pie chart"
  chartTitle="Pie chart"
  title="Sample JFreeChart based pie chart"
  colors="red,green,blue,cian,magenta,yellow"
  is3D="false"
  startAngle="290"/>
```

Produced output :

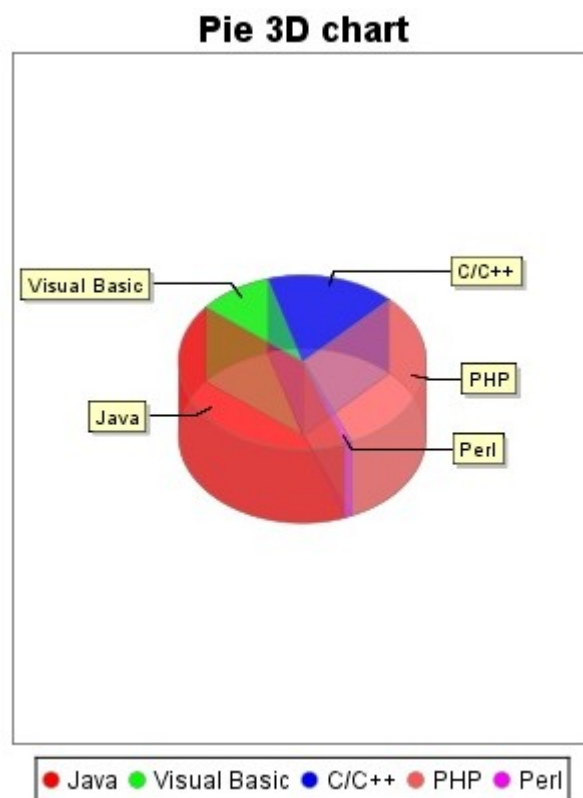


## 2. 3D pie chart.

Component's definition:

```
<chart:chart id="chart2"
  datasource="#{chartBean.pieChartSource}"
  type="PIE"
  alt="Sampe pie 3D chart"
  chartTitle="Pie 3D chart"
  title="Sample JFreeChart based pie 3D chart"
  colors="red,green,blue,cian,magenta,yellow"
  is3D="true"
  startAngle="290"
  depth="30"
  alpha="50"
  output="JPEG"/>
```

Produced output :

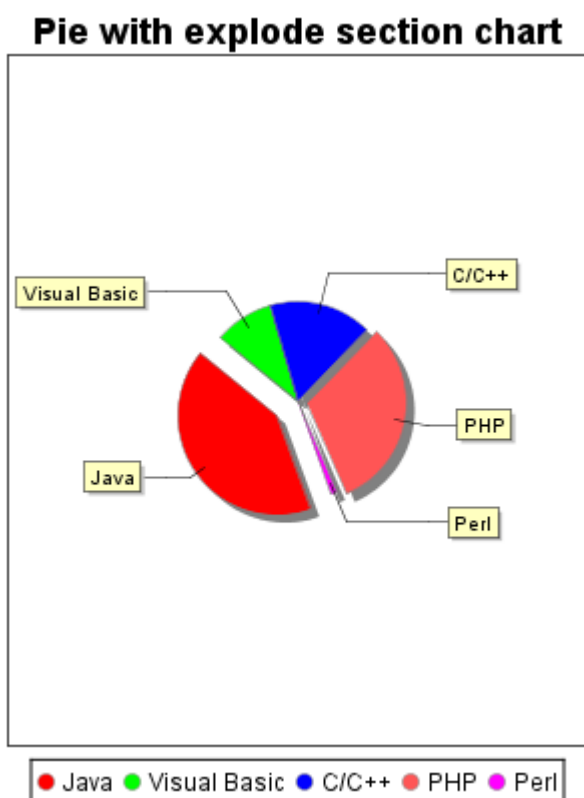


### 3. Pie chart with exploded sections

Component's definition:

```
<chart:chart id="chart4"  
  datasource="#{chartBean.pieChartSource}"  
  type="PIE"  
  alt="Sampe pie with explode section chart"  
  chartTitle="Pie with explode section chart"  
  title="Sample JFreeChart based exploded section pie chart"  
  colors="red,green,blue,cian,magenta,yellow"  
  is3D="false"  
  explodePersents="0,25;3,10"  
  startAngle="290"/>
```

Produced output :

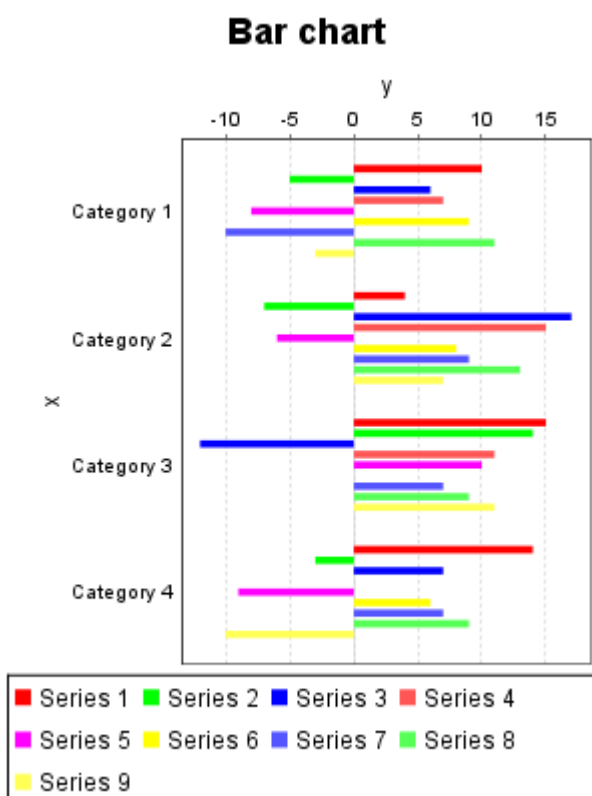


## 4. Bar chart

Component's definition:

```
<chart:chart id="chart2"
  datasource="#{chartBean.barChartSource}"
  type="BAR"
  outline="false"
  orientation="horizontal"
  is3D="false"
  alt="Sampe bar chart"
  chartTitle="Bar chart"
  title="Sample JFreeChart based bar chart"
  colors="red,green,blue,cian,magenta,yellow,navy,maroon,brown"/>
```

Produced output :

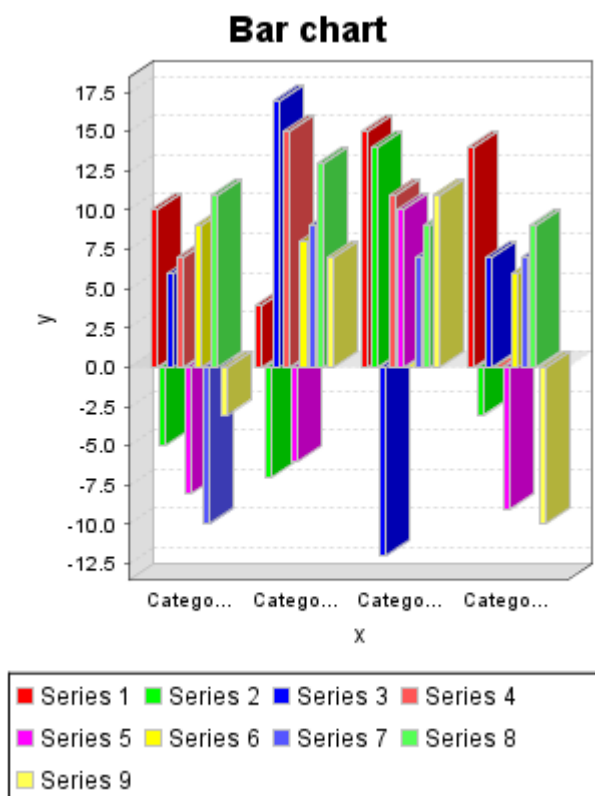


## 5. 3D bar chart

Component's definition:

```
<chart:chart id="chart1"
  datasource="#{chartBean.barChartSource}"
  type="BAR"
  outline="true"
  alt="Sampe bar 3D chart"
  chartTitle="Bar chart"
  title="Sample JFreeChart based bar chart"
  colors="red,green,blue,cian,magenta,yellow,navy,maroon,brown"/>
```

Produced output :



## 6. Histogram chart

Component's definition:

```
<chart:chart id="chart6"
  datasource="#{chartBean.signalChartSource}"
  type="SIGNAL"
  outline="true"
  alt="Sampe histogram chart"
  chartTitle="Histogram chart"
  title="Sample JFreeChart histogram chart"
  colors="red,blue"/>
```

Produced output :

