



# Soft Aspects

RIAs & Beyond



**New light of Rich Internet Applications**

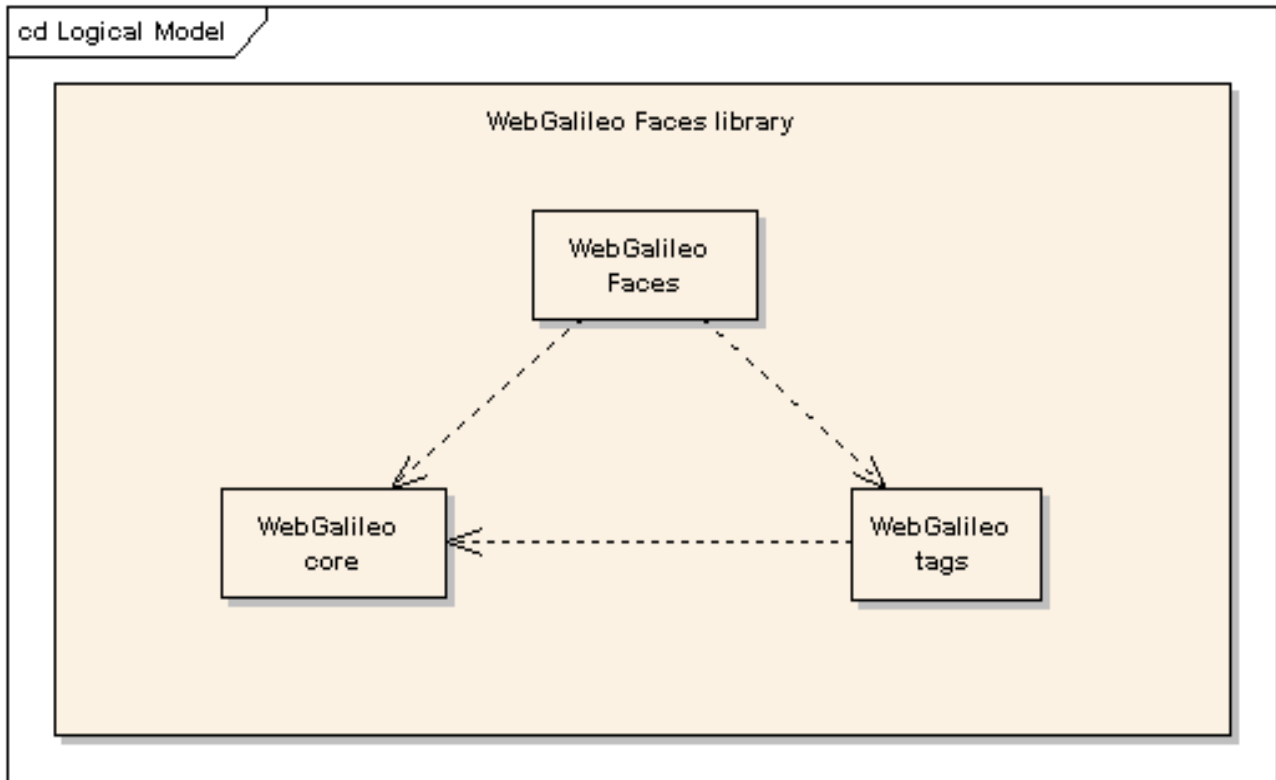
# WebGalileo Faces© Framework overview

## Table of Contents

1Subsystems overview.....	3
2WebGalileo Core subsystem.....	4
3WebGalileo Tags subsystem.....	5
4WebGalileo Faces© subsystem.....	6

# 1 Subsystems overview.

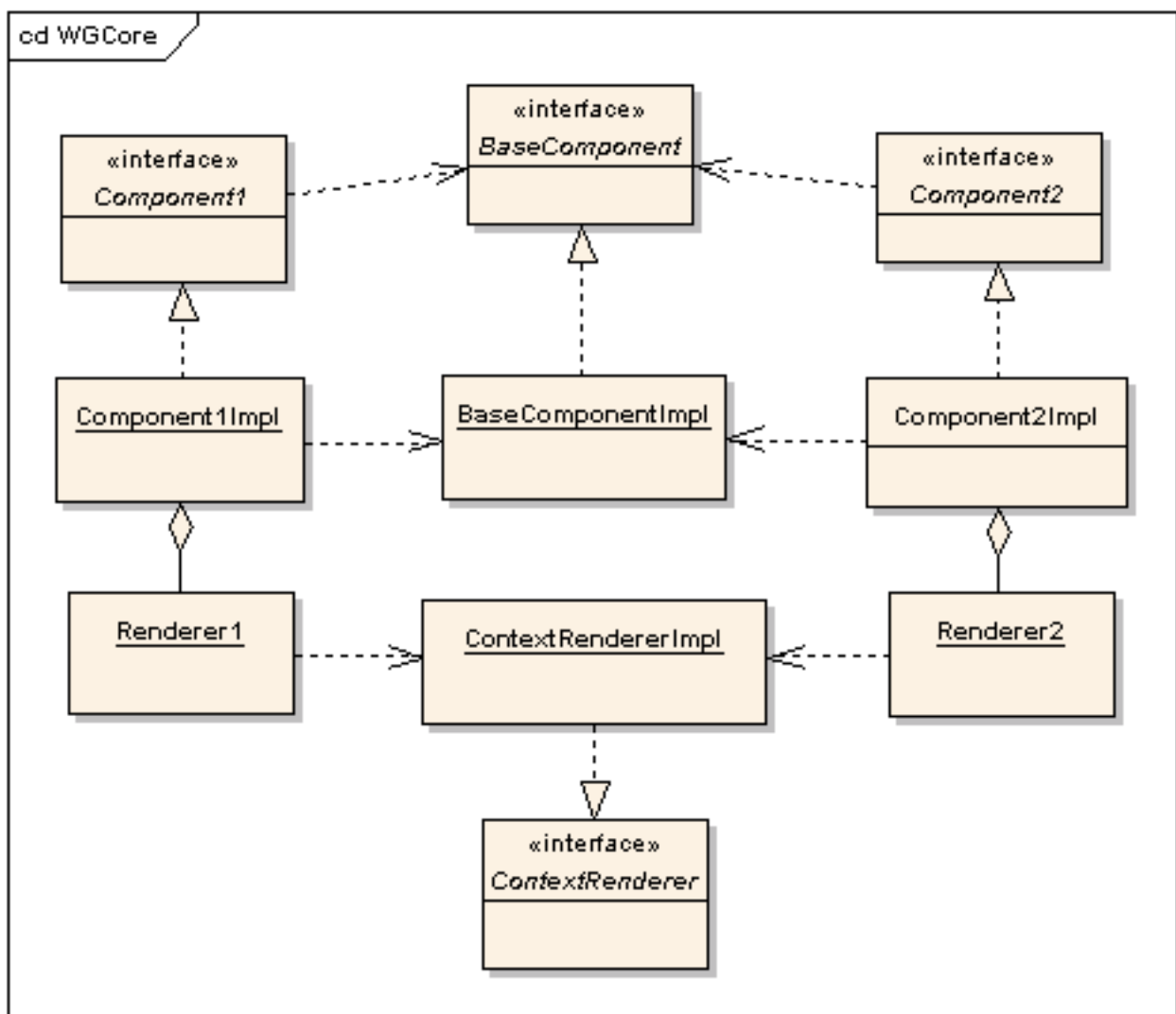
WebGalileo Faces library consists of the three main subsystems :



## 2 WebGalileo Core subsystem.

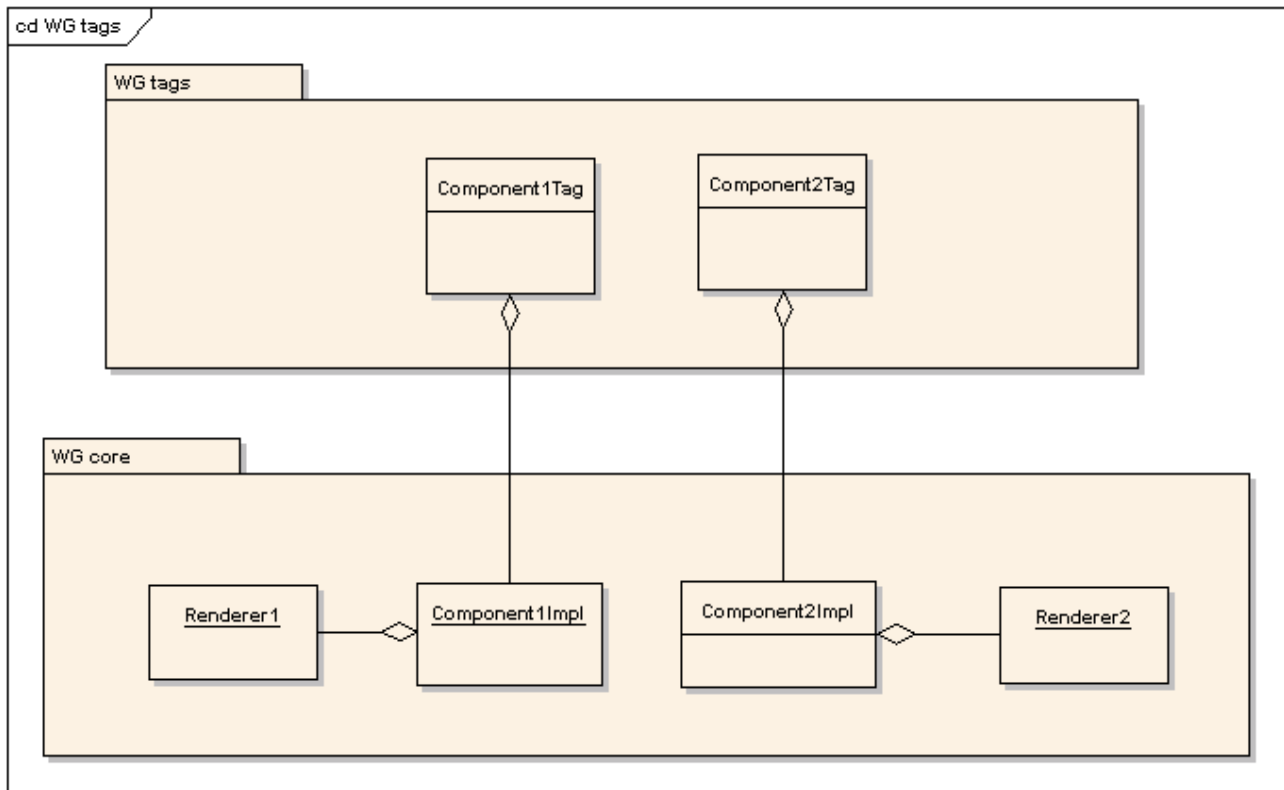
Contains the product core classes that are independent from particular Presentation Layer Frameworks like Struts , JavaServer Faces. To support a specific framework ( Struts , JSF etc ) that classes should extend the ones from the core classes. This way any existing ( and new ) Presentation Layer Frameworks can be supported as it's done in the case of WebGalileo Faces© product that meets JavaServer Faces specification.

The below diagram shows how new components in core subsystem should be developed to serve as the basis for any Presentation Layer component.



### 3 WebGalileo Tags subsystem.

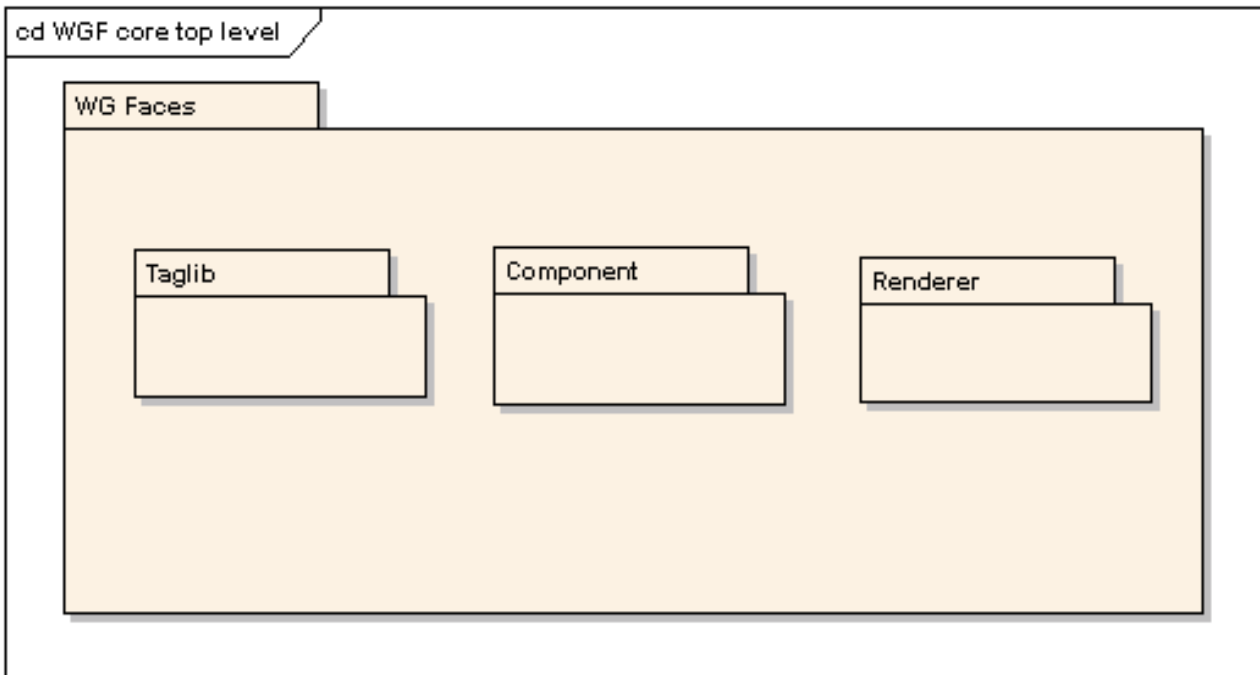
Contains support for custom Tags implementation for components from the WG Core package:



## 4 WebGalileo Faces© subsystem.

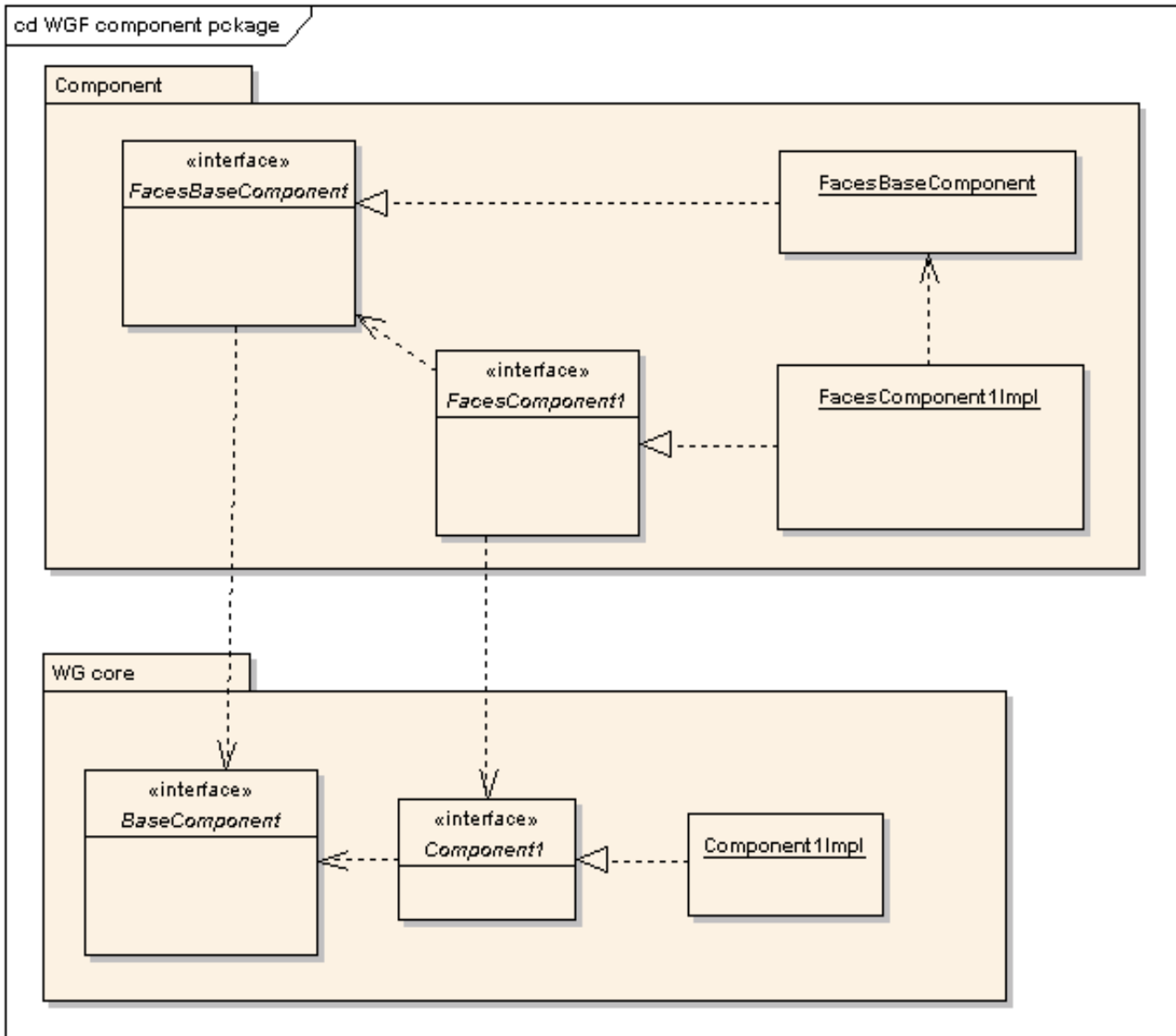
Contains classes of WebGalileo Faces© JSF third-party components extended from core subsystem components and implementing JSF specific interfaces.

The picture below presents the structural view of the subsystem.

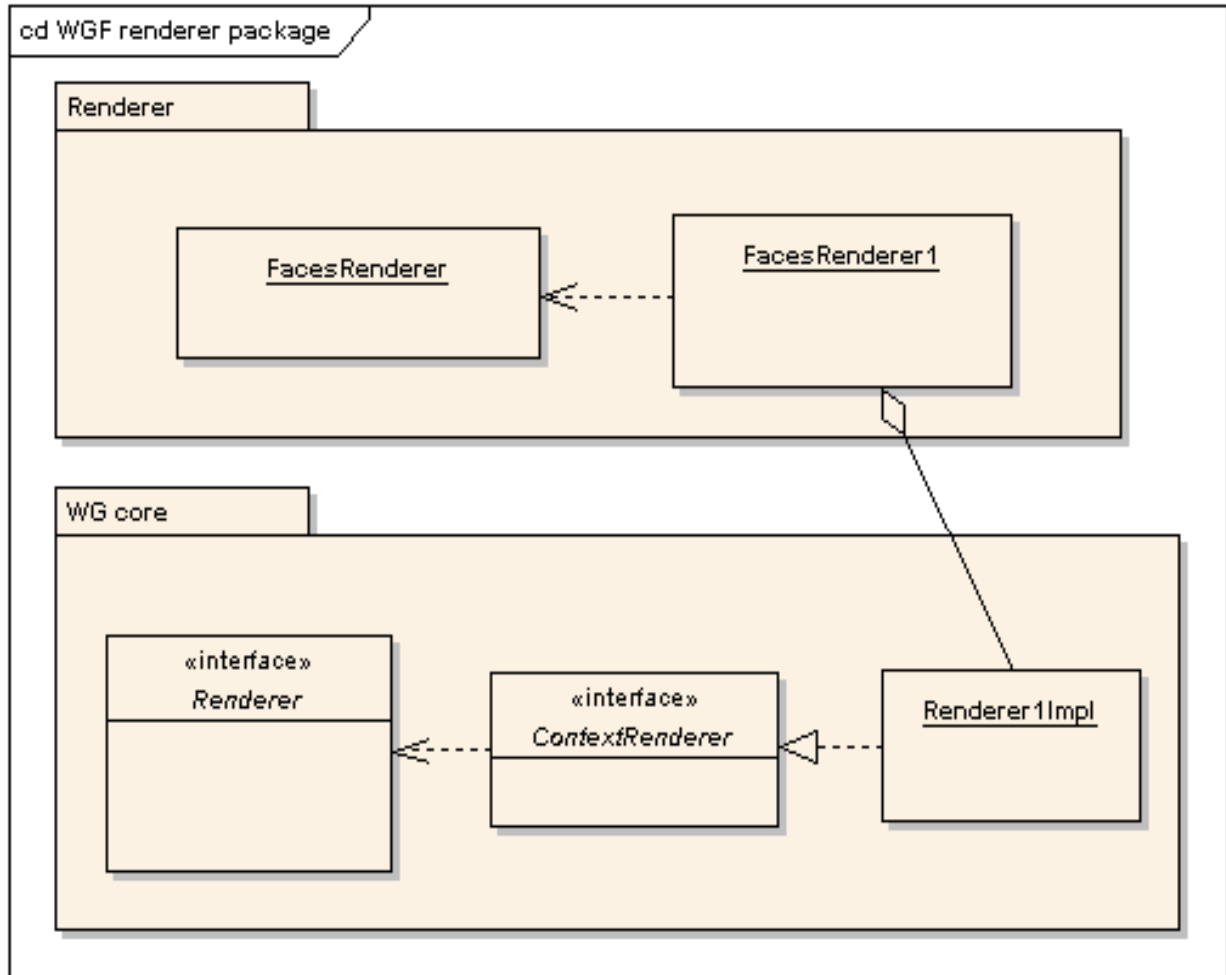


WebGalileo Faces© Taglib is the package containing JSF third-party components custom tags classes.

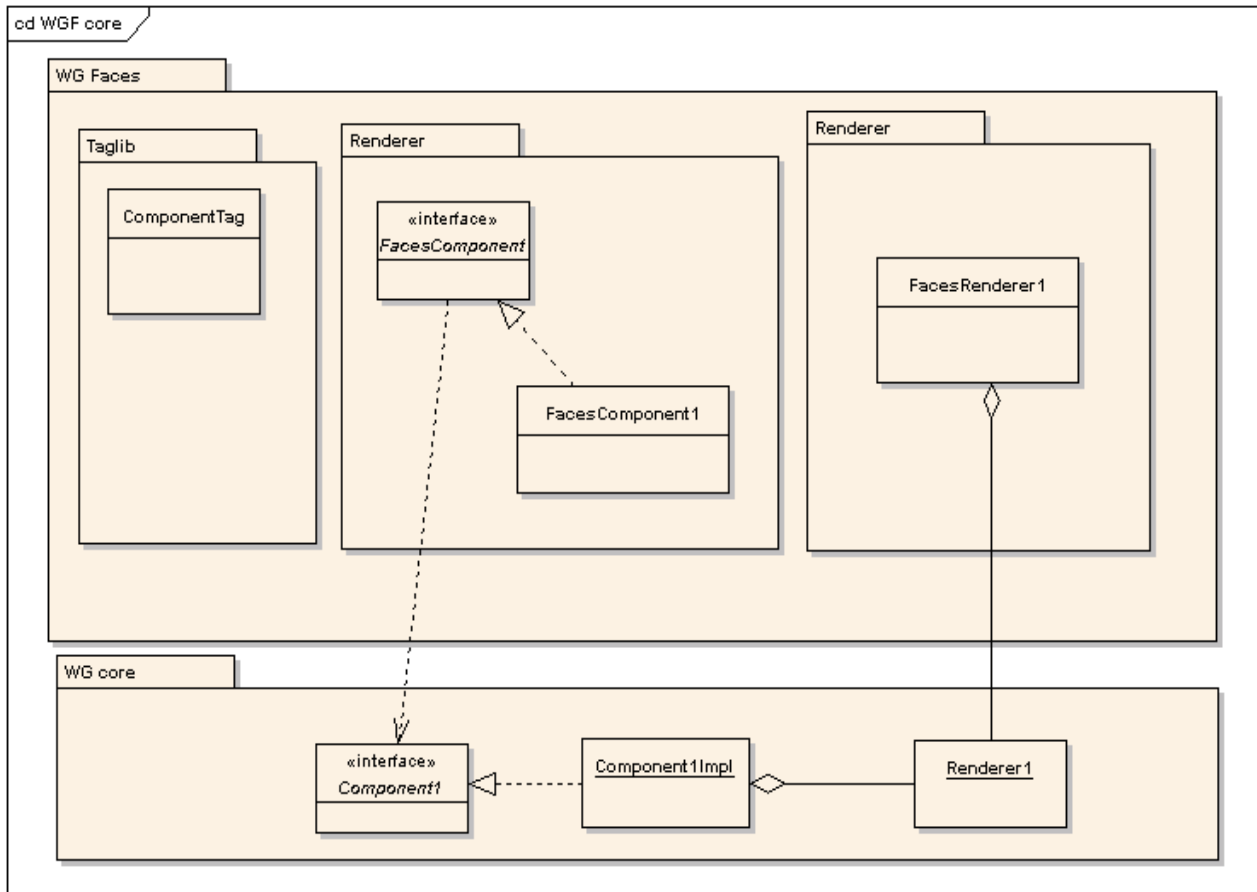
WebGalileo Faces© Component package contains the set of interfaces to allow the integration with WG Core subsystem and its successors. It includes base classes for all of the WebGalileo Faces© JSF third-party components.



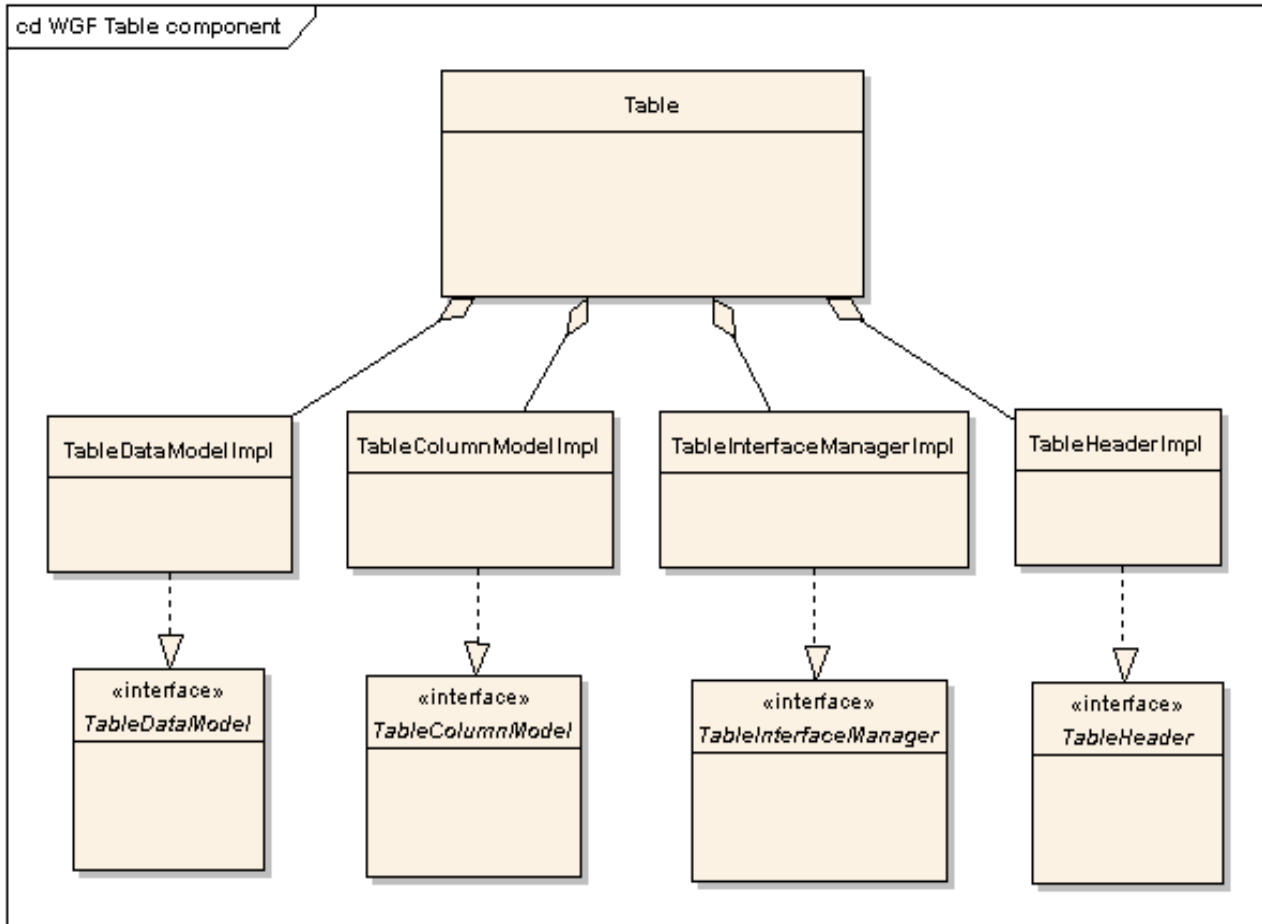
WebGalileo Faces© Renderer package contains the third-party JSF renderers.



The below diagram shows the typical structure of any WebGalileo Faces© JSF third-party component .



The following diagram shows the base structure of one of the most complex WebGalileo Faces© Table Component.



In addition to the standard method of development of new WebGalileo Faces© components when core subsystem classes should be created firstly then extended in the specific JSF related classes , there is the simplified approach of new WebGalileo Faces© components development that is the most suitable in the cases when there is no necessity to support more than one Presentation Layer Framework ( Struts , JSF etc ).

If there is the requirement to support only JavaServer Faces specification , the below diagram shows the method of creation of JSF compatible component based on WebGalileo Faces© subsystem only.

