



# Soft Aspects

RIAs & Beyond



**New light of Rich Internet Applications**

# WebGalileo Faces© Technology Integration PlugIn Overview

## Table of Contents

1. Technology Plugin overview.....	3
2. JSR 168 Portals Plugin.....	3
3. Facelets Plugin.....	4

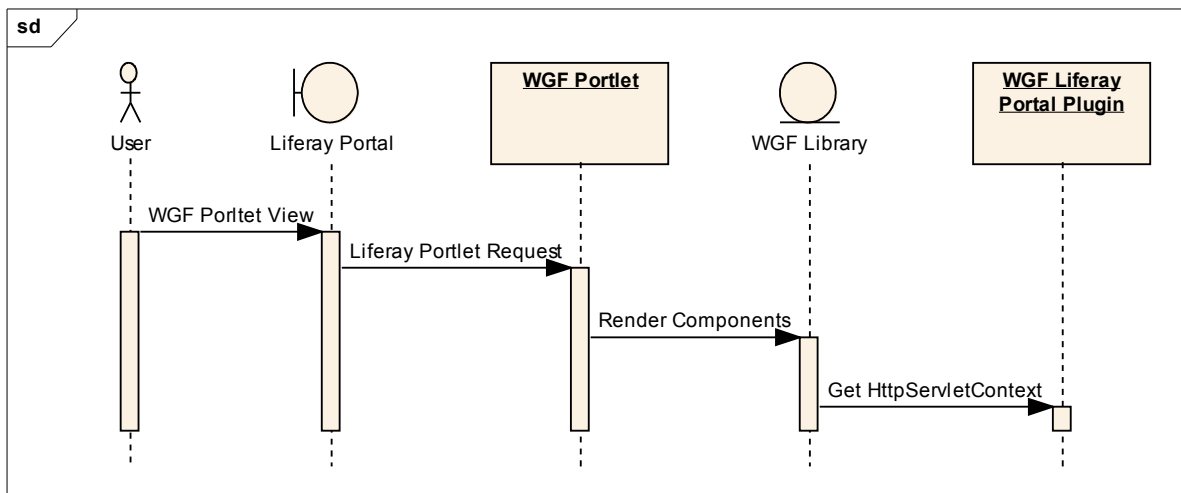
## 1. Technology Plugin overview

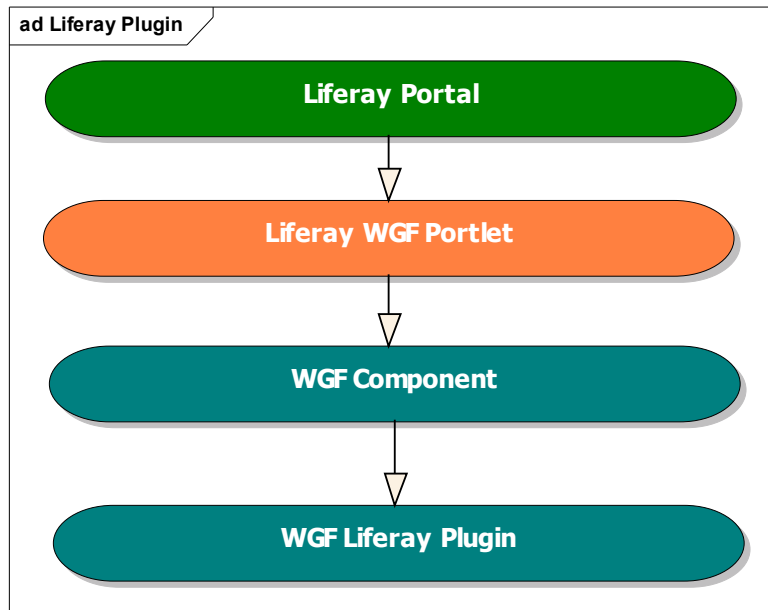
WebGalileo Faces© provides the unified approach for integration with such technologies like JSR 168 compatible Portals and Facelets.

## 2. JSR 168 Portals Plugin

Due to the differences in the implementation of JSR 168 specification by different Portal vendors , WebGalileoFaces© provides plugin architecture to handle them. It includes **ContextAdapter** to be implemented to handle Portals' specific treatment of standard `HttpServletRequest` , `HttpServletResponse` objects.

The product includes ready to use implementation of WebGalileoFaces© Liferay Portal plugin. The pictures below show the typical request processing performed by the plugin.

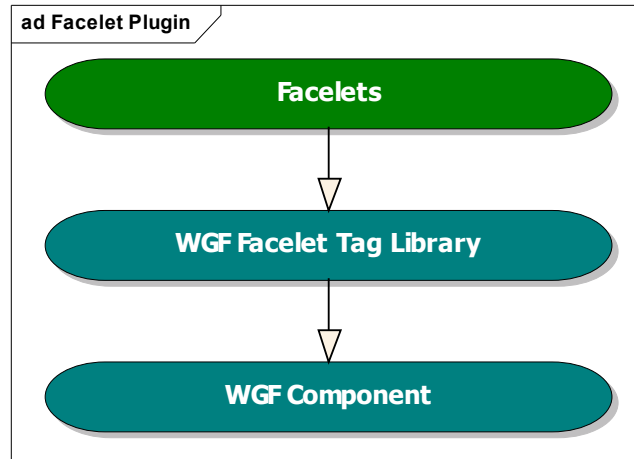




### 3. Facelets Plugin

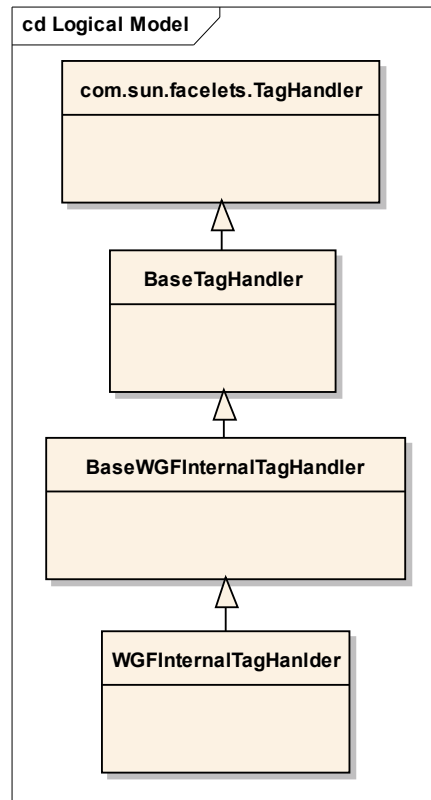
Facelets technology provides own implementation of JavaServer Faces components configuration and handling. WebGalileoFaces© components includes the plugin for Facelets consisting of Facelets tag libraries handlers and JSF configuration file integrated with the components.

The picture below presents the typical processing lifecycle for Facelets plugin.



To integrate Facelets technology with JSF components , custom tag library was created. By default , Facelets supports standard JSF components and 3<sup>rd</sup> party ones which have to be defined in XHTML page as one tag with set of attributes. For integration purpose WGF framework uses native Facelets tag handlers mechanism. In fact , WGF uses children tags to define components' look-n-feel. Moreover , WGF provides plug-in library containing custom tag handlers to address WGF components internal tags integration with the technology.

The picture below represents typical WGF tag handler structure.



WGF BaseTagHandler class extends standard Facelets TagHandler class logic and implements general functionality for all WebGalileo Faces tag handlers.

BaseWGFInternalTagHandler extends BaseTagHandler and implements custom functionality of particular WebGalileo Faces component internal tags.

WGFInternalTagHandler class is automatically generated by meta-data definition and contains functionality to handle internal tag properties. That class extends WGFInternalTagHandler. WGFInternalTagHandler class is included into Facelets tag library definition.

The picture below represents typical lifecycle of rendering WebGalileo Faces

complex components with Facelets technology.

